

# SEG-6MA-xxxWW

SERIES 6 INCH 72 CELLS



**SERAPHIM**  
ENERGY GROUP

**335-350<sub>w</sub>**

## Safety



Resistance to salt mist corrosion at your request



Resistance to ammonia corrosion at your request



Product is certified by UL1703

## Reliability



Anti-PID products using advanced module technology



World 1st company to pass "Thresher Test" and "On-site Power Measurement Validation" certificate

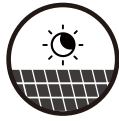


Bankable products

## Performance



Withstand high system voltage up to 1500V to save BoS Cost



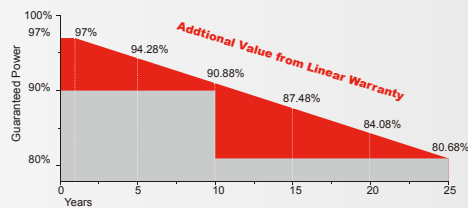
Outstanding power output capability at low irradiance



Withstand up to 2400Pa wind and 5400Pa snow loads(IEC), long lasting



## WARRANTY



**10**  
YEARS

Guarantee on product material and workmanship

**25**  
YEARS

Linear power output warranty

## MANAGEMENT SYSTEM

**ISO 9001:** Quality management system

**ISO 14001:** Standard for environmental management system

**OHSAS 18001:** International standard for occupational health and safety assessment system

## PRODUCT CERTIFICATES



## INSURANCE



# SEG-6MA-XXXWW SERIES 6 INCH 72 CELLS



WW: WHITE BACK-SHEET / SILVER FRAME PRODUCTS

## Electrical Characteristics(STC)

Module Type	SEG-6MA-335WW	SEG-6MA-340WW	SEG-6MA-345WW	SEG-6MA-350WW
Maximum Power at STC - $P_{mp}$ (W)	335	340	345	350
Open Circuit Voltage - $V_{oc}$ (V)	46.4	46.6	46.8	47.0
Short Circuit Current - $I_{sc}$ (A)	9.23	9.32	9.43	9.51
Maximum Power Voltage - $V_{mp}$ (V)	37.5	37.7	37.9	38.1
Maximum Power Current - $I_{mp}$ (A)	8.94	9.02	9.11	9.19
Module Efficiency STC- $\eta_m$ (%)	17.26	17.52	17.78	18.04
Power Tolerance (W)	(0,+4.99)			
Maximum System Voltage (V)	1000 or 1500(UL)			
Maximum Series Fuse Rating (A)	20			
Fire Performance	Type2 or Type1(UL)			

## Electrical Characteristics(NOCT)

Module Type	SEG-6MA-335WW	SEG-6MA-340WW	SEG-6MA-345WW	SEG-6MA-350WW
Maximum Power at NOCT - $P_{mp}$ (W)	249	252	256	260
Open Circuit Voltage - $V_{oc}$ (V)	42.8	43.0	43.2	43.4
Short Circuit Current - $I_{sc}$ (A)	7.53	7.59	7.68	7.75
Maximum Power Voltage - $V_{mp}$ (V)	35.3	35.5	35.6	35.8
Maximum Power Current - $I_{mp}$ (A)	7.05	7.10	7.19	7.27

## Temperature Characteristics

Pmax Temperature Coefficient	-0.38 %/°C
Voc Temperature Coefficient	-0.28 %/°C
Isc Temperature Coefficient	+0.05 %/°C
Operating Temperature	-40~+85 °C
Nominal Operating Cell Temperature (NOCT)	45±2 °C

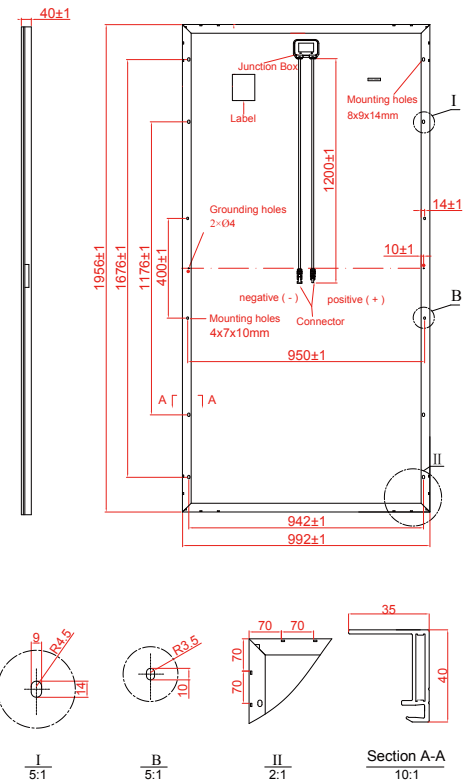
## Packing Configuration

	1956 x 992 x 40mm (77.01×39.06×1.58 inch)
Container	40'GP
Pieces per Pallet	26
Pallets per Container	24
Pieces per Container	624

## Mechanical Specifications

External Dimensions	1956 x 992 x 40 mm (77.01×39.06×1.58 inch)
Weight	21.5 kg (47.4 lbs)
Solar Cells	Monocrystalline, 6 inch (72pcs.)
Front Glass	3.2 mm AR coating tempered glass, low iron
Frame	Anodized aluminium alloy
Junction Box	IP67
Output Cables	12AWG, cable length:1200 mm
Connector	MC4 Compatible

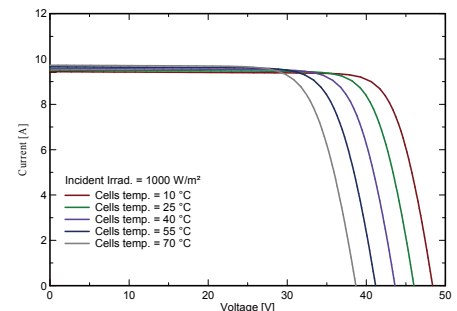
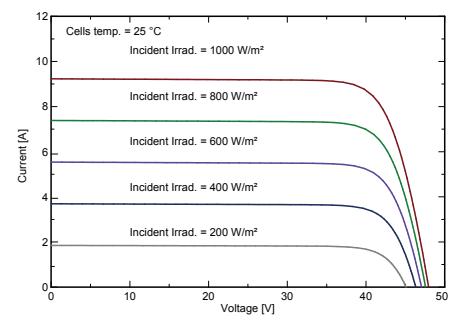
STC: Irradiance 1000 W/m<sup>2</sup>, module temperature 25°C, AM=1.5  
 NOCT: Irradiance 800 W/m<sup>2</sup>, ambient temperature 20°C, wind speed :1m/s  
 Specifications are subject to change without further notification.



\* All Dimensions in mm

\* The above drawing is a graphical representation of the product.

## I-V Curve



Specifications are subject to change without notification SEG-DS-EN-2019V1.1 © Copyright 2019 Seraphim

SERAPHIM ENERGY GROUP, INC.